

SAW Resonator 915 MHz

MODEL NO.: TD0106A

REV. NO.:1

A. FEATURES:

1. 2-Port Resonator.

B. MAXIMUM RATING:

1. Input Power Level: 0 dBm

2. DC voltage: 12 V

3. Operating Temperature: -40°C to +85°C

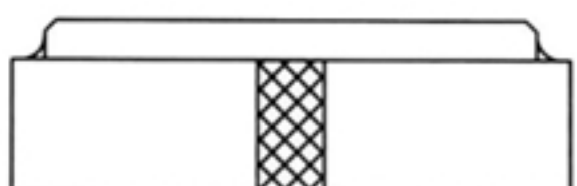
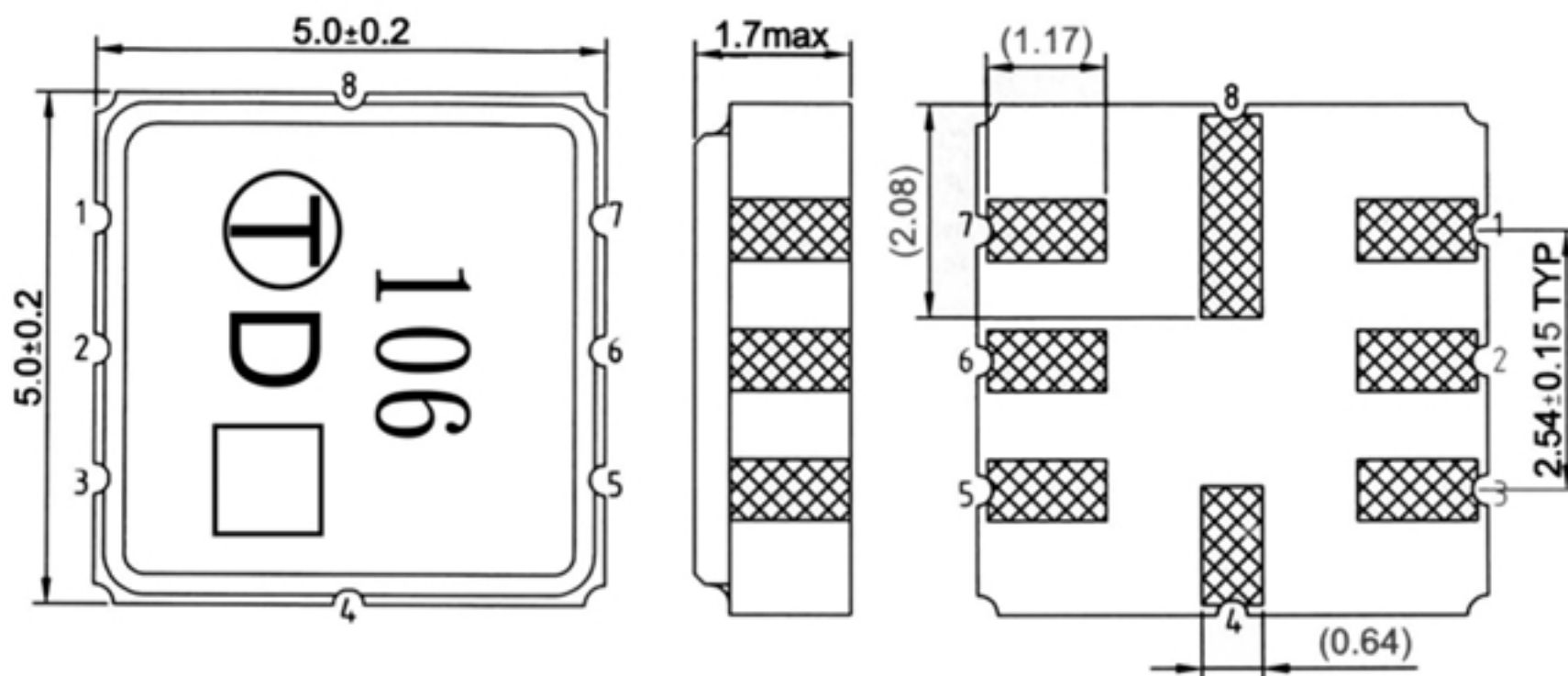
4. Storage Temperature: -40°C to +85°C

C. ELECTRICAL CHARACTERISTICS:

Characteristic	Units	Minimum	Typical	Maximum
Center frequency Fr	MHz	914.850	915.000	915.150
Insertion Loss IL	dB	-	8	9
Equivalent Elements				
Motional capacitance C1	fF	-	0.225	-
Motional inductance L1	μH	-	134.5	-
Motional resistance R1	Ohm	-	125	-
Parallel capacitance Co	pF	-	1.9	-
Temp. coeff.	ppm/c*2	-	0.032	-
Turnover To	deg.C	-	25	-
Package size		SMD 5X5X1.4mm		

RoHS Compliant
 Lead free
 Lead-free soldering

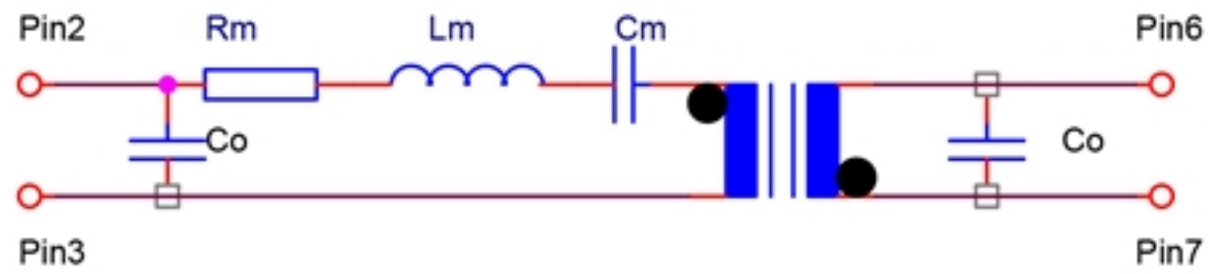
D. OUTLINE DRAWING:



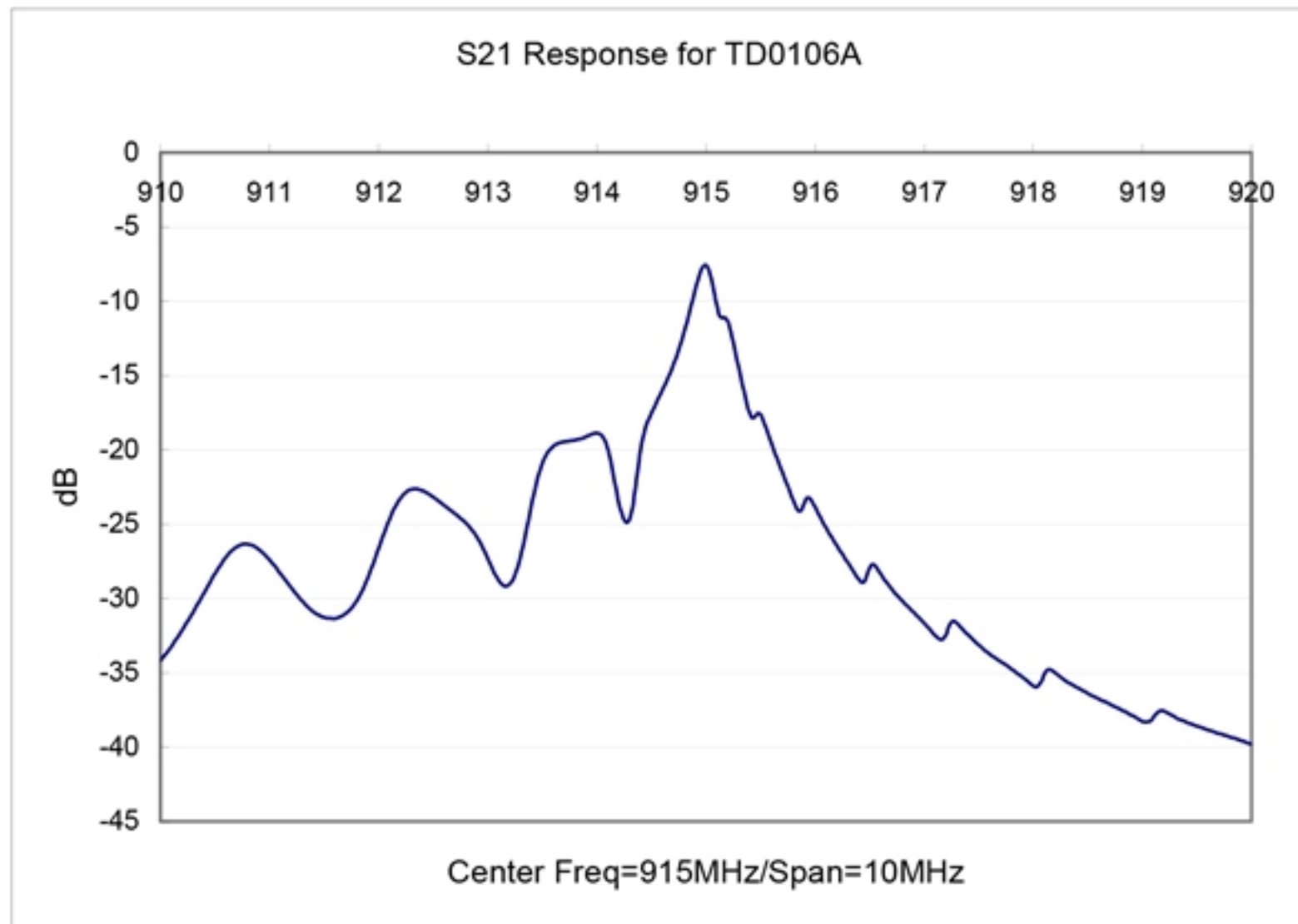
#2 : Input or Output
 #6 : Output or Input
 #4、8 : Case Ground
 #1、3、5、7 : Ground
 □ : Date code
 Unit : mm

E. EQUIVALENT CIRCUIT:

Two-Port Resonator:



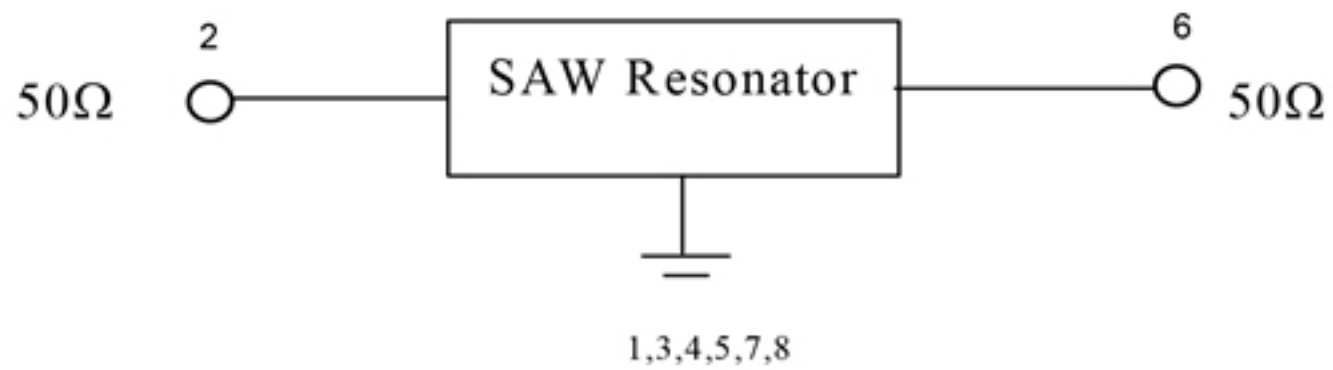
F. FREQUENCY CHARACTERISTICS:



G. TEST CIRCUIT:

Network analyzer

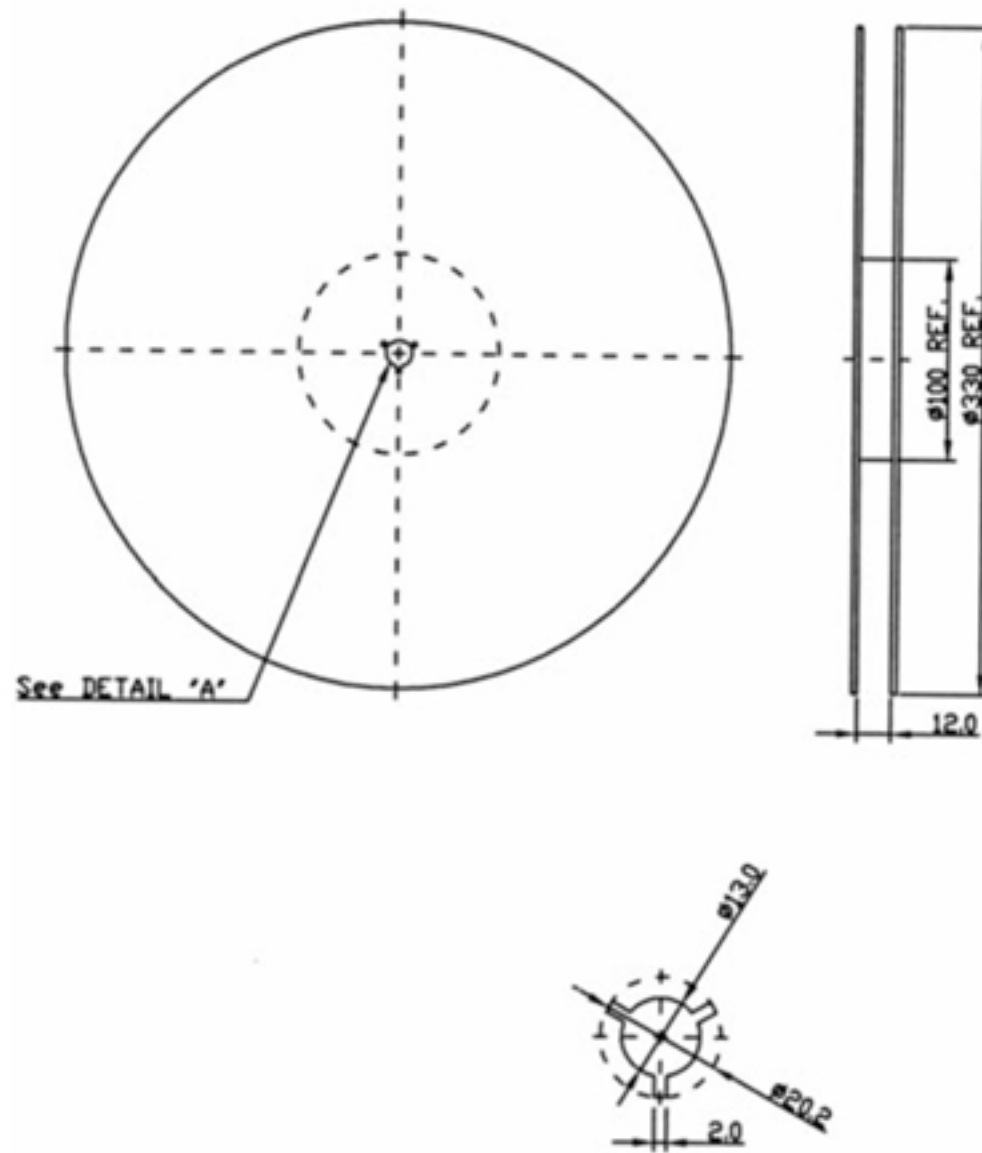
From 50Ω
Network
Analyzer



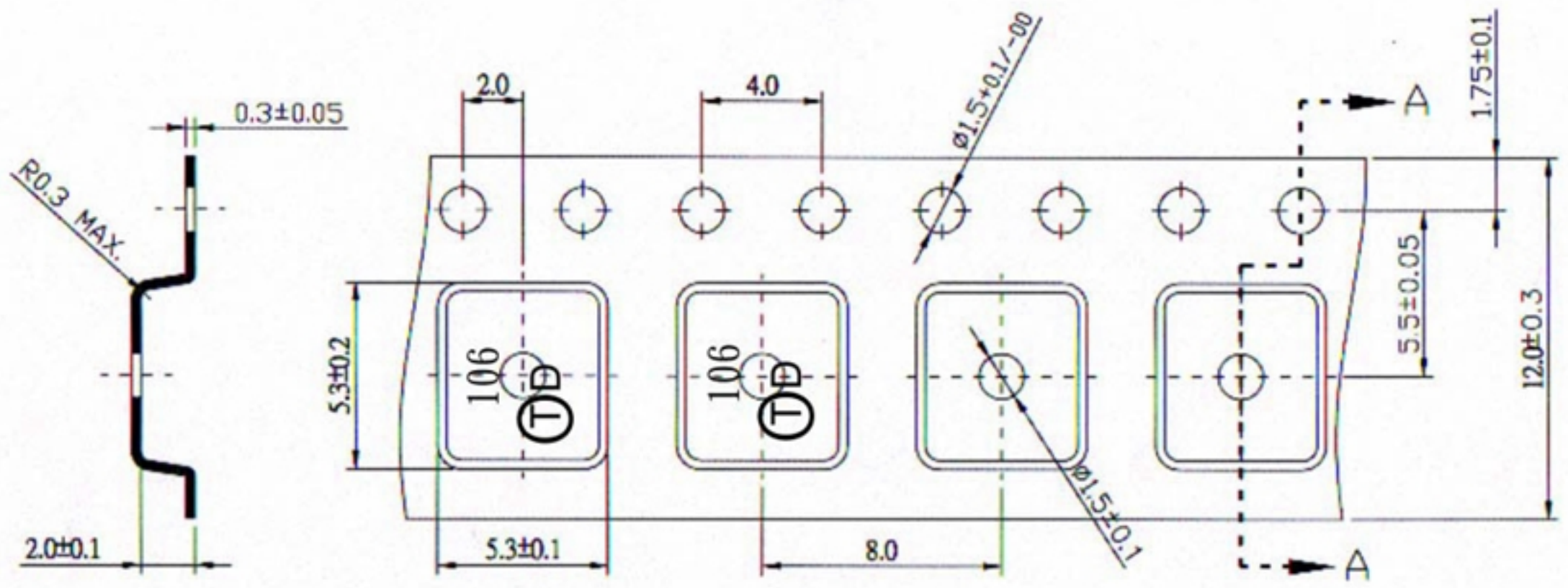
To 50Ω
Network
Analyzer

H. PACKING:

1. REEL DIMENSION



2. TAPE DIMENSION



Section A-A